

**If you're building or repairing your home...**

# **WARNING... "Don't Choose A Builder Until You Read This..."**

When you need your residential or commercial building or renovating project completed on time and budget, using trade qualified, high quality workmanship, and don't know who to trust, well what we do is put our extensive knowledge and experience to work for you to complete your project to the highest quality- guaranteed.

We understand that every new residential building offers the unique opportunity to create a legacy and valuable asset for you and your family's future. Having worked on a wide variety of design styles, the Whyte team offers you extensive first-hand experience and the highest quality of trade expertise (our team has over 500 years of combined experience), so you know you're in the right hands.



*"Our experience and qualifications will ensure the best result, guaranteed!"*  
-David Whyte

And we know how frustrating it can be to deal with poor quality shoddy workmanship, time delays, red tape, budget over-run being let down. Instead, when you choose Whyte Construction you'll discover we will do everything possible to develop your project to ensure its true potential is maximised, with professional, hassle-free service that gives you the result you really want without any stress.

Building high quality architecturally designed homes, alterations and renovations in the Christchurch and Canterbury region represents our core business. We can also accommodate all those special and unique features which distinguish your project from the norm (and have your friends, family and neighbours talking excitedly about the end result!).

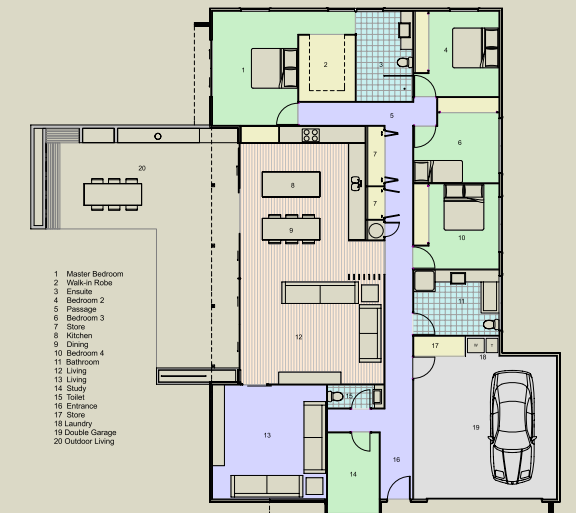
To find out more, simple call on 0800333360 or email [info@whyteconstruction.co.nz](mailto:info@whyteconstruction.co.nz) to request a Building or Repairing fact sheet or to arrange a meeting to understanding the next step.

## **10 Great Reasons To Choose Whyte Construction**

- ✓ Focus on **QUALITY**: our **trade qualified** team has **over 500 years** of combined experience in residential and commercial projects in New Zealand and around the world.
- ✓ Your project is in the **right hands**: we're fully accredited and certified members of the Certified Builders Association of New Zealand. That means we're trade qualified and meet the highest industry standards.
- ✓ We respect your time is precious: we'll be **on time** for both our appointments and completing your project.
- ✓ Stay on budget: our professional estimating systems cover all building costs so you **know the true cost** before you start. Don't get caught out not knowing the true cost of your project.
- ✓ Stress-free service: a **personal project manager** will oversee your project and keep in touch every step of the way.
- ✓ A **complete range of services** means we can look after everything for you, with no hassles (as we've been doing for 14 years). We offer design and build services along with plan appraisal services, Whether for new homes, alterations and additions, or property maintenance and landscaping, you'll find we can complete your project and exceed your expectations.
- ✓ We're here **when it suits you**: we're available 24 hours a day, 7 days a week if required.
- ✓ Our written **guarantee** ensures complete peace of mind (Plus new homeowners are covered by the 10-year Homefirst Builders Guarantee.
- ✓ **Locally** owned and operated
- ✓ All our **work is compliant** with NZ Building Codes.

## **Do you need to rebuild?**

We have a range of modular home plans constructed in **Metra Panel** - a quick, cost effective building system. Metra Panel is not dimensionally stable but during an earthquake, provides a strong, safe building that exceeds the bracing elements of the NZ Building Code.



Call us today to find out more about these and other Home Designs. Phone 0800 333 360.

**"The perfect solution for award-winning NZ design... 100% Guaranteed"**



- **Exhilarating** designs created by award winning Peter Wynyard (ADNZ Professional member with **20 years** industry experience)
- **100% guaranteed** Architectural Designs for **New Zealand conditions**
- Interior and exterior **integration specialist**
- Costing management provided throughout the **design process**
- Restorative, Contemporary and eco-Sustainable **award-winning designer**

Call today for your no obligation appointment 0800 333 360  
**ARCHIMETRIX LTD**



## **You're Protected By Our Ten Year Comprehensive Guarantee**

Our 10 year fully comprehensive guarantee (covering workmanship, building products and completion of your contract) ensures complete peace of mind and that you're protected. In the unlikely event your workmanship or building products are defective, we will work for you for free to fix it, or pay a competitor to do so. We can't be any fairer than that.



# **WHYTE CONSTRUCTION LTD**

**CALL 0800 333 360** 37 Leslie Hills Drive, PO Box 9349, Christchurch  
email: [info@whyteconstruction.co.nz](mailto:info@whyteconstruction.co.nz) [www.whyteconstruction.co.nz](http://www.whyteconstruction.co.nz)

